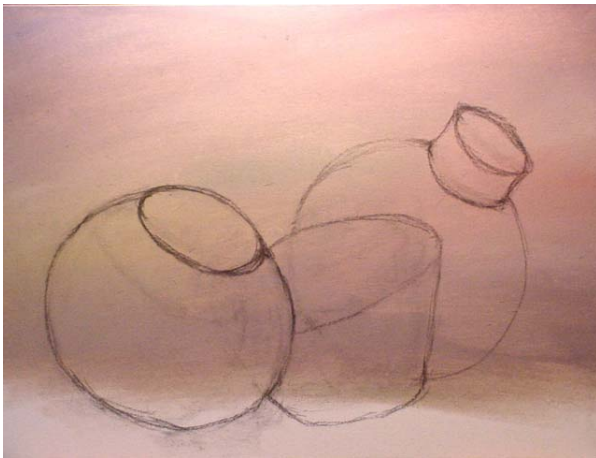


An Example of this is as follows, from a Broken Pots commissioned painting:



This is the canvas with the background laid down. In this case it is a mottled background of several colors. The variation in background colors is desired as it lends visual interest to the finished painting.



In this phase, I have sketched the pots in using soft vine charcoal on the dried background layer.



In this phase, I have laid down the underpainting for the background grass and twigs. This is done in a very loose, impressionistic manner.



In this phase, I have provided a bit more texture to the background grass.



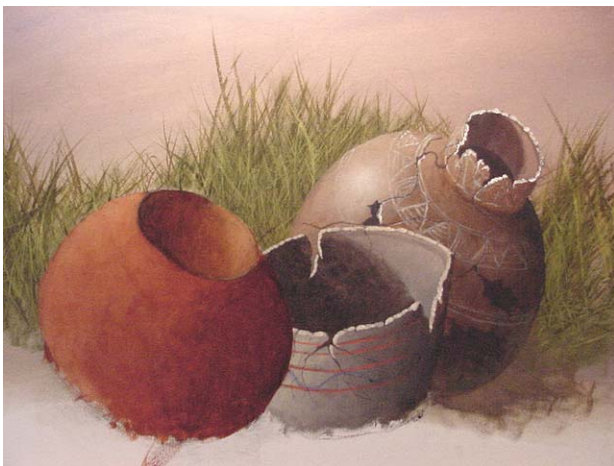
Here, I have underpainted the pot shape for the pot located the furthest back in the scene.



Now, I have detailed the pot further to the rear and underpainted the middle pot.



In this scene, I have detailed the middle pot



In this phase, I have underpainted the pot located most forward.



The front pot is in the process of being detailed.



Here is the completed painting, "Broken Pots (Commissioned)".